

WHINLESS DOWN
ACADEMY TRUST



BECOMING A
TRUSTEE

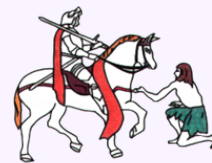
Recruitment Pack



Priory Fields School

Everyone Achieving Together

Vale View
Primary School



St Martin's
School


Ofsted

Good
Provider



INTRODUCTION

The Whinless Down Academy Trust's (WDAT) mantra is to provide excellent opportunities for local children, in local schools, run by local people. The WDAT is a primary school only Multi-Academy Trust based in Dover, Kent, comprising of Vale View Primary School, Priory Fields School and St Martin's School. Although our three schools are within walking distance of each other, they each have their own unique character and ethos, which we encourage and celebrate.

We are committed to school improvement, relentlessly striving to become outstanding. We aim to provide a curriculum that excites, enthuses and engages all learners.

The Trust Board seeks a non-executive director (Trustee) with a background in any of the following areas:

Finance/Accounting

Education

Premises/Health & Safety/Estate Management/Risk

HR/Personnel

Project Management

Branding/Marketing

Legal

THE ROLE OF THE TRUSTEE

Our Trustees are responsible for the strategic oversight, administration and management of the Trust to develop and achieve the Trust's vision, and to ensure compliance with government and ESFA requirements, company law and charity law. They set the vision and policies for the Trust, ensuring strong and effective governance, and have legal obligations for the proper conduct of the business of the Trust.

The Trust Board also has a responsibility for safeguarding, health and safety and financial oversight.





Our Trust Vision and Values

Our Vision is to provide an education that inspires
and prepares children for life



Aspiration

By instilling high expectations and promoting a sense of ambition



Happiness

By demonstrating compassion to all and encouraging achievement to forge success



Courage

Preparing children to take risks and challenging themselves



Collaboration

Being united in our educational aims and using each other's expertise to secure improvement



Imagination

Inspiring and innovating creative thinking and thinkers and creating environments where children can soar



Empowerment

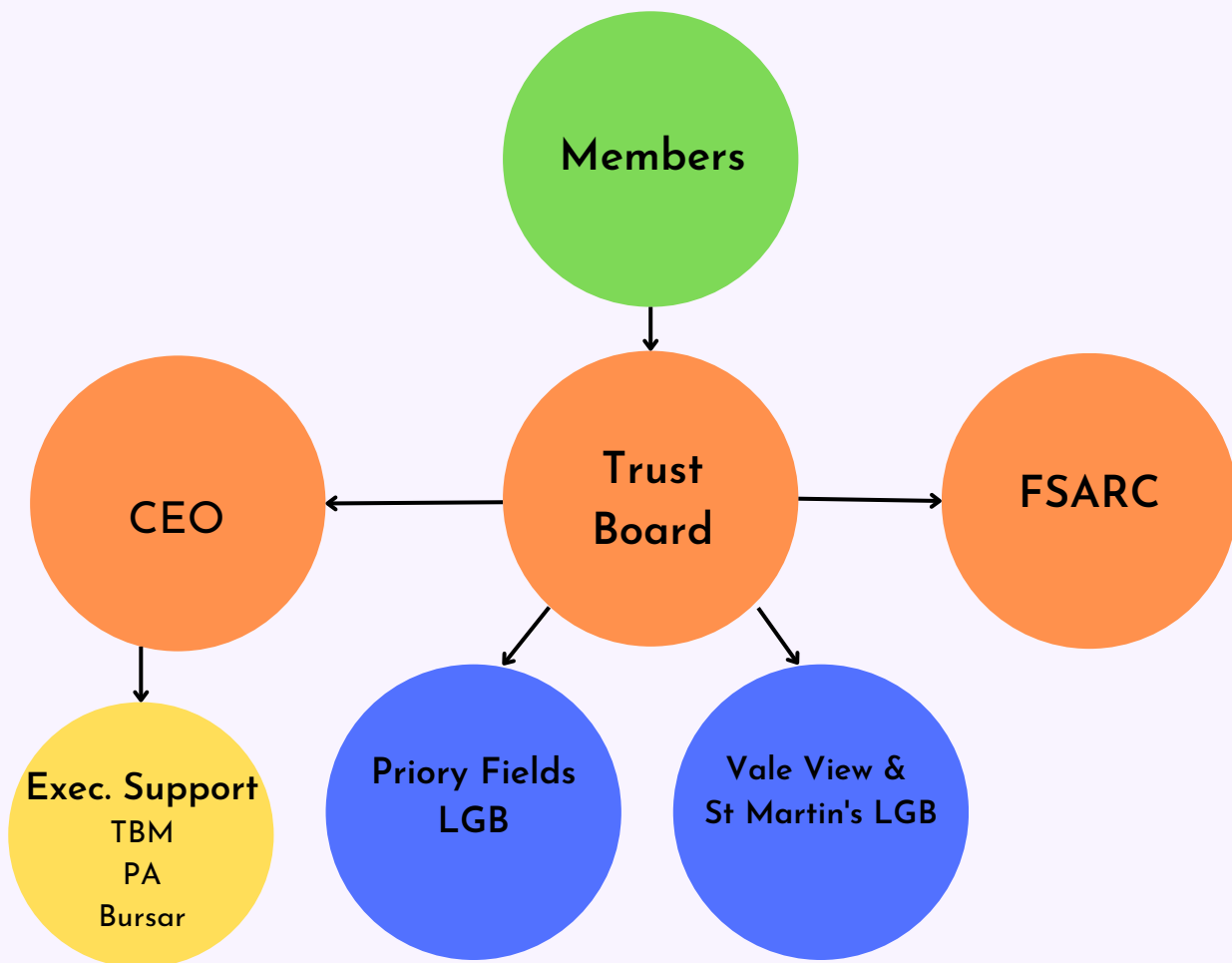
Enabling children and adults to achieve the highest standards and allowing adults and children to think and communicate without fear.



DUTIES AND EXPECTATIONS

We hold 5 Trust Board meetings a year and they usually commence at 4pm. We expect Trustees to attend all meetings. We have a Finance, Strategy, Audit and Risk Committee (FSARC) who are involved in separate meetings which take place 5 times a year, as well as a Standards Committee who conduct monitoring visits throughout the year.

There are two Local Governing Bodies (LGBs) in our Trust which consist of local governors who hold separate meetings.



JOIN US!


Your involvement will help shape policies and initiatives that drive excellence and innovation within our Trust. Together, we can create a nurturing and empowering environment for our children, preparing them for the challenges of tomorrow. If you are ready to make a meaningful impact and be part of a dedicated team committed to educational excellence, we would love to hear from you. Join us in our mission to inspire and empower every child to reach their full potential.


Do I need to have certain qualifications?


You do not need any specialist knowledge of education although an appetite to gain knowledge is beneficial. If you don't have experience in the specified areas, we still invite applications from anyone who is interested with the right personal attributes; such as problem solving, developing good relationships and effective teambuilding, community minded, creative or strategic thinking and a commitment to make a difference in the lives of the children who attend our schools; and to the development of our hardworking members of staff.

Trustees are subject to an enhanced DBS check and should not be a subject of a Section 128 direction (preventing individuals banned from being involved in the management of schools).

GET IN TOUCH:

whinlessdowntrust.co.uk 

 pa@whinlessdowntrust.co.uk

 01304 200350



**WHINLESS DOWN
ACADEMY TRUST**