



# Our Plastic Planet

## WHAT IS THE EFFECT OF PLASTIC FOR THE FUTURE OF OUR WORLD?

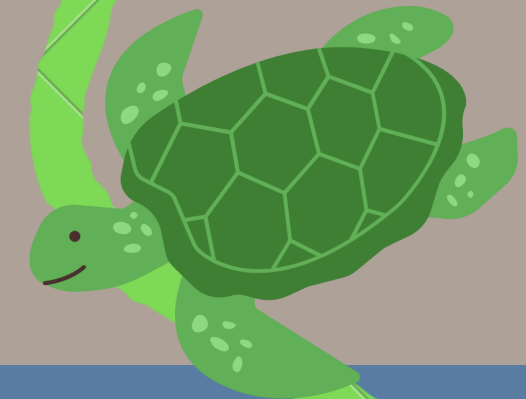
### What I already know from previous years -

There are 5 oceans in the world - Atlantic, Pacific, Southern, Indian and Arctic.

The equator is a line around the centre of the earth, the north pole is in the Arctic and the south pole is in the Antarctic.

Animals live in a chosen habitat which provides for their needs.

In order to survive, animals need to have their basic needs met, these being - water, food and air.



SAVE  
the  
PLANET

### How do humans impact the environment?

Humans impact the environment in different ways, these include -

- Pollution from vehicles and power stations release chemicals into the air.
- Human use of plastic causes lots of waste and rubbish which needs to be disposed of. This rubbish can be washed into drains and flowing into the sea.
- Cutting down trees can affect wildlife; creatures lose their food sources and homes.



### How can we raise awareness of our impact on the ocean using art?

Artists have used rubbish which has been found on beaches around the UK to create pieces of artwork.

Some artists have taken the opportunity to show how rubbish can be put to good use.

Robert Bradford is an example of one of these artists.



ART

### Why are our oceans important?

Our oceans are important for many different reasons, including -

Lots of people are reliant on fishing to earn money for their families.

Fish are a main source of food for nearly one billion people around the world.

The oceans absorb some of the sun's heat; this regulates our climate.

The oceans provide a home to a wide variety of wildlife.

GEOGRAPHY



### Vocabulary

**Plastic** - Synthetic material made from polymers.

**Micro-plastic** - Small plastic pieces less than 5 millimetres long which can be harmful to our ocean.

**Bio-degradable** - Able to be broken down by organisms.

**Degrade** - To break down over time.

**Ocean** - A huge body of saltwater. The ocean covers nearly 71% of the Earth's surface and makes up 78% of Earth's water.

**Environment** - Anything that surrounds us.

**Pollution** - Where the air, land or water is made dirty by chemicals and rubbish.

**Conservationist** - A person who advocates or acts for the protection and preservation of the environment and wildlife.

**Northern Hemisphere** - The half of the earth which lies north of the equator.

**Southern Hemisphere** - The half of the earth which lies south of the equator.

**Arctic** - The region around the North Pole.

**Antarctic** - The region around the South Pole

### What is the impact of plastics on our oceans?

8 million tons of plastic is found in our oceans each year; this can be a risk to animals living in or around the water.

By 2050, the oceans could have more plastic in them than fish.

Some plastics which end up in the ocean can take thousands of years to degrade. Some marine animals can mistake plastic bags for food meaning they eat them and become poorly.

We can help by using fewer single-use plastics such as carrier bags and plastic water bottles.

### How long does plastic last?

