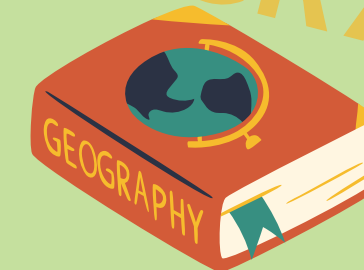




The Shape of the UK

Why would tourists visit the United Kingdom?

GEOGRAPHY



'GEOG' YOUR MEMORY

What did you learn in Geography before?

- There are 5 oceans in the world:

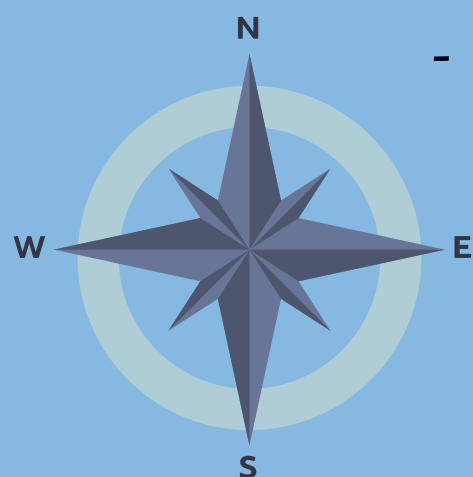
Pacific, Atlantic, Indian, Southern and Arctic.

- The land on Earth is split into 7 continents:

Asia, Africa, North America, South America, Antarctica, Europe and Australia.

- You have used the terms beach, cliff, city and harbour.

- The UK is split into 4 countries, each with their own capital city - England (London), Scotland (Edinburgh), Wales (Cardiff), Northern Ireland (Belfast).



Where is the UK on Earth?

The UK is part of the continent of Europe and is located in the Northern Hemisphere.



We live on the coast.
We live in the South East.

The UK is divided up into counties. We live in the county of Kent.
Kent is bordered by East Sussex, London, Surrey and Essex.

What is the purpose of a map?

A map presents information about the world in a visual way.

Why do we use grid references?

Grid references allow us to locate an area on a map quickly.

What are the physical features which attract tourists to the UK?

Exploring natural, physical features are one of the reasons as to why tourists come to the UK, these include mountains, rivers and lakes.

Vocabulary

UK (United Kingdom) - Comprised of England, Scotland, Wales and Northern Ireland.

Great Britain - Comprised of England, Scotland and Wales.
Physical features - Include seas, rivers, lakes and mountains and are formed naturally.

Human features - Includes buildings, bridges, sculptures and are built by humans.

Tourist - A person who is travelling or visiting a place for pleasure.

Landmark - A feature of a landscape or town which is easily recognised.

Coastline - The boundary where the land meets the sea.

Compass - Showing the direction.

National Park - An area of outstanding natural beauty

