

The Garden of England

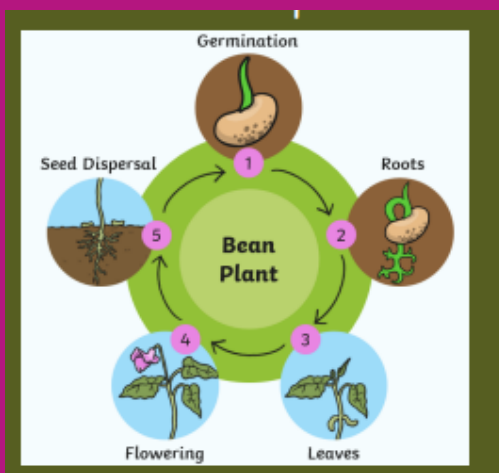


Science

What do I already know about plants...

- Deciduous trees lose their leaves.
- Evergreen trees keep their leaves.
- Plants can have leaves, flowers, petals, fruit, bulbs, roots, stems and branches.

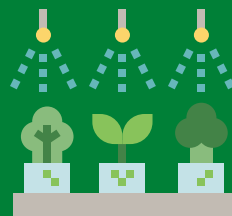
How do seeds and bulbs need to grow into mature plants?



temperature



What do plants need to grow well?



nutrition

Key Vocabulary

germination -

When the conditions are right, the seeds soak up the water and swells and the tiny new plant bursts out of its shell.



shoot -

A shoot grows upwards from the seed or plant to find sunlight.



seed dispersal -

when seeds move away from the parent plant. They can drop to the ground in the plant's fruit or be moved by the wind or animals.

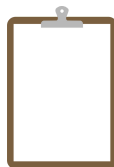


Geography

What is fieldwork?

When you go outside and find out things about a place. Before you start your fieldwork, you need to decide what you want to find out. You can do this by thinking of questions and how you will find out the answers.

Which tools can be helpful in fieldwork? Why?



paper, pencil and cameras are helpful to record what you find out.



hoop - to record what you see in a certain area .



thermometer - to measure temperature.

How do seeds and bulbs need to grow into mature plants?

Draw a diagram to help.

What do plants need to grow well? Draw some pictures to help.

Seed dispersal is

Germination is

A shoot is

What is field work?

Which tools can help with fieldwork?